



卓德 机械设备有限公司
卓德 高新材料有限公司

SHANDONG ADROIT GROUP

SHARE WITH THE WORLD

© 山东卓德机械设备有限公司
SHANDONG ADROIT MACHINERY AND EQUIPMENT CO.,LTD
Add: Zhangdian District, Zibo City, Shandong Province, China PC255000
Web:www.adroitchina.com Email: admin@adroitchina.com
Tel/Fax:+86-533-3110690 Cell:+86-13953382085

© 卓德高新材料有限公司
ADROIT ADVANCED MATERIAL CO.,LTD
Add: Zhangdian District, Zibo City, Shandong Province, China
Tel:+852-29738324 Fax:+852-21153613

公司介绍 ABOUT ADROIT

卓德集团-卓德新材料及山东卓德机械设备有限公司位于驰名世界的瓷都之一——淄博。主营产品包括陶瓷辊棒，氧化铝球，氧化铝衬砖，球磨机，高效节能泵，倒浆泵，施釉线设备，振动筛，除铁机，耐火产品，窑具（碳化硅、莫来石和堇青石）等陶瓷工业用品。产品远销西班牙、意大利、埃及、南非、印度、越南、孟加拉等国，并得到客户高度认可，业务范围不断扩大。以客户为中心，以质量为本，以效率为依托，未来道路，卓德集团愿与您精诚合作，互利共赢。

Adroit Group-Adroit Advanced Material Co., Ltd and Shandong Adroit Machinery and Equipment Co., Ltd are located in Zibo City-- the world famous ceramic capital.

The main products are: Ceramic roller, Alumina ball, Lining brick, Energy-saving Ball Mill, Slip pump, Slurry-max pump, Glazed line, Vibrating sieve, Magnetic iron remover, Refractory Products, Kiln furniture(Silicon carbide, Cordierite and Mullite), etc. Our products have been sold all over the world, such as Spain ,Italy, Egypt, South Africa, India, Vietnam, Bangladesh, etc.

We already rewarded the reputation and good feedback from our customer, and we are still striving to make great improvements in the near future.

Focus on customer, Rely on quality to survive, Make efficiency as the support.

In the future, hope we could cooperate with you and make mutual benefits sincerely.



目录 Catalogue

陶瓷厂耗材 Consumptive materials for Ceramic factory

- 陶瓷辊棒 Ceramic Roller
- 氧化铝球 Alumina Ball
- 衬砖 Lining Brick

陶瓷厂机械 Machinery for Ceramic factory

- 球磨机 Ball Mill
- 高效节能泵 Slip Pump
- 施釉线 Glazing Line
- 振动筛 Vibrating Sieve
- 除铁机 Magnetic Iron Remover

日用瓷/卫浴瓷耗材 Consumptive materials for Tableware/Sanitary Ware

- 耐火产品 Refractory Products
- 窑具-碳化硅系列产品 Kiln Furniture-Silicon Carbide Series
- 窑具-堇青石和莫来石系列产品 Kiln Furniture -Cordierite & Mullite series





陶瓷辊棒 CERAMIC ROLLER

应用：广泛应用于瓷片、西瓦、仿古砖、薄板、瓷质砖、全抛砖、日用陶瓷及其他陶瓷产品的生产。
 特点：JD-Tech系列辊棒采用先进的配方和工艺，具备超强的抗热震稳定性，具有更高的高温强度和高温承载力，是辊道窑的绝佳选择。

Application: Widely used in the manufacturing of wall tile, roof tile, rustic tile, thin tile, porcelain tile, polishing glazed, tableware and other ceramic productions.
 Characteristics: JD-Tech rollers manufactured with advanced formulations and recipe, has **strong thermal shock resistance, higher bending strength & could heavy loaded in high temperature**, they are regarded as the best solution for Roller hearth kiln.

规格型号 Dimension

| 直径 diameter(mm) | 长度 length(mm) | 直径 diameter(mm) | 长度 length(mm) |
|-----------------|---------------|-----------------|---------------|
| 65~80 | 3000~5000 | 40 | 2000~5000 |
| 60 | 2700~5000 | 36 | 2000~3000 |
| 55 | 2700~5000 | 35 | 2000~3200 |
| 50 | 2400~3800 | 33.7 | 1800~3100 |
| 45 | 2200~3800 | 32 | 1800~3100 |
| 42 | 2200~3800 | 16~31 | 1600~3100 |

产品应用 Application

JD-TECH辊棒在超宽体窑炉良好运行
 Perfect performance in Super Wide GVT Kiln



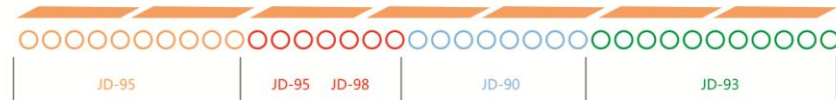
钢铁产品生产
 Steel Products Production

预热带
 Preheating Zone
 50-1000°C

高温带
 Firing Zone
 1000-1300°C

急冷带
 Fast Cooling Zone
 1000-650°C

缓冷带
 Cooling Zone
 650-80°C



生产车间 Production room



仓储车间 JD-TECH Roller warehouse



集装箱木箱包装发运 Wooden case container delivery



裸装集装箱装运 Loose packing shipment

性能参数 Technical Index

| 项目 Item | JD-98 | JD-95 | JD-93 | JD-90 | |
|---|---------------------------|-----------|-----------|-----------|---|
| 最高工作温度(°C) Maximum operating temp | 1350 | 1300 | 1250 | 1200 | |
| Al ₂ O ₃ 含量(%) Al ₂ O ₃ content | 80-82 | 78-80 | 76-78 | 75-76 | |
| 吸水率(%) Moisture absorption | 3.0-6.0 | 5.0-7.5 | 5.0-7.5 | 5.0-7.5 | |
| 体积密度(g/cm ³) Bulk density | 2.60-2.90 | 2.50-2.80 | 2.80-3.10 | 2.50-2.80 | |
| 抗弯强度(Mpa) Bending strength | 50-65 | 40-55 | 35-55 | 40-55 | |
| 热膨胀系数 Coefficient of Thermal Expansion | 6.0-6.4 | 6.0-6.4 | 6.0-6.5 | 6.0-6.4 | |
| 热稳定性 Thermal stability | Good | Good | Good | Good | |
| 用途 Application | Large size porcelain tile | √ | | √ | |
| | Tableware | √ | √ | √ | √ |
| | Polishing glazed tile | √ | √ | √ | √ |
| | Wide body kiln | √ | √ | | √ |
| | Porcelain tile | √ | √ | | √ |
| Rustic tile | √ | √ | √ | √ | |



氧化铝球 ALUMINA BALL

应用：采用先进的工艺和优质的原料新型配方，该产品是陶瓷、水泥、油漆、颜料、化工、医药、涂料、矿山等行业的研磨介质。
特点：硬度高，韧性好，密度大，磨耗低，耐腐蚀，外形规则。

Application: With advanced cutting technology, high quality alumina powder as raw materials & sophisticated recipe, our products are the best solution as grinding media applied in various field such as ceramic industry, cement industry, paint industry, pigment industry, chemical industry, pharmaceutical industry, coating and mining industry.

Characteristics: **high hardness, high density, low wear loss, good erosion resistance, regular shape, etc.**

性能参数 Technical Index

| 技术指标 | Qualification | JD-68 | JD-75 | JD-80 | JD-85 | JD-92 |
|-----------------------------------|--|--------------|----------|-----------|-----------|-----------|
| Al ₂ O ₃ 含量 | Al ₂ O ₃ content | ≥68 | ≥75 | ≥80 | ≥85 | ≥92 |
| 吸水率 | Moisture absorption | ≤0.02% | ≤0.02% | ≤0.02% | ≤0.01% | ≤0.01% |
| 体积密度 | Density | 2.95-3.02 | 3.2-3.25 | 3.30-3.35 | 3.40-3.45 | 3.60-3.63 |
| 硬度 | Hardness | 7.5 | 8 | 9 | 9 | 9 |
| 抗压强度 | Compressive strength | ≥1700 | ≥1700 | ≥1800 | ≥1850 | ≥2000 |
| 当量磨耗 | Equivalent wear loss | ≤0.18‰ | ≤0.12‰ | ≤0.10‰ | ≤0.10‰ | ≤0.08‰ |
| 颜色 | Color | Light yellow | grey | white | white | white |



使用指导 Filling guidance for Using

在湿磨过程中，球石的装填量达到球磨机净体积的50-55%时，能达到最佳状态，可以通过经验公式计算球磨机中球体的重量：
During wet grinding process, when charge balls up to 50%-55% net volume of ball mill, the best status can be realized, and the weight of balls within the ball mill can be estimated with formula.

$$G=3.14*(R-H)^2*(L-2H)*P*(50\% \sim 55\%)*(1-25\% \sim 30\%)$$

G:球石加入量 (kg) G:charge of alumina ball P:球石比重 (g/cm³) P:Density of ball
H:衬砖厚度 (cm) H:Thickness of lining brick L:球磨机长度 (cm) L:Length of ball mill
R:球磨机内半径 (cm) R:Inside radius of ball mill

注意：(1) 50%-55%：研磨效率最高时，球石体积占球磨机有效容积的比例。

(2) 25%-30%：球石空隙率。

(3) 以上计算方法仅限于吨位3吨以上的球磨机。

Attention:(1) 50%-55%:Best status of grinding, the net volume of balls inside ball mill.

(2)25%-30%:Inside space of ball mill.

(3)above calculation for ball mill capacity should be larger than 3 tons only.

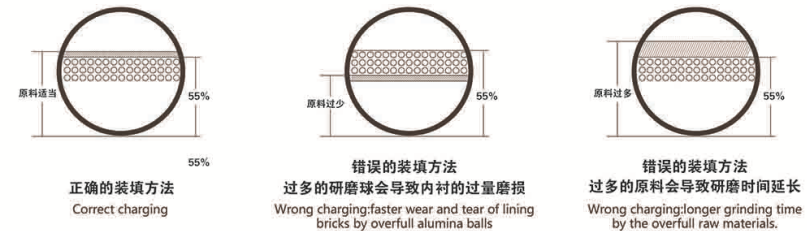
球石配比 Alumina Ball Ratio

应根据球磨机和原料系统的具体情况，采取合适的氧化铝球级配。通常被磨物料越粗，强度越高，加入的球石中大球比例相应增大。
According to the different size of alumina balls, the charging should be depending on ball mill capacity and grinding materials. Therefore, bigger size ball should be properly increased for larger grains and high strength raw materials and small size balls should be reduced accordingly.

$$\text{日常球石添加量 (A)} = \text{原始入球量 (B)} * \text{球石磨耗 (C)} * \text{球磨时间 (D)}$$

$$\text{Alumina ball recharged(A)} = \text{first charge(B)} * \text{balls wear and tear(C)} * \text{grinding time(D)}$$

球石的正确装填：正确的装填方法，错误的装填方法如下图：





氧化铝衬砖 ALUMINA LINING BRICKS

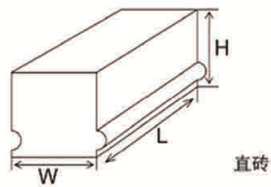
应用：用于球磨机耐磨内衬，广泛应用于陶瓷、水泥、油漆、颜料、化工、医药、涂料等行业。
特点：能有效提高研磨效率，降低研磨成本，是球磨机内衬的最佳选择。

Application: The Alumina lining bricks are used as the lining in the ball mill of ceramic industry, cement industry, paint industry, pigment industry, chemical industry and pharmaceutical industry.

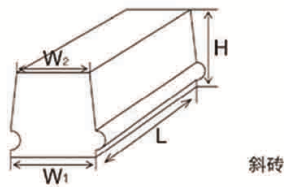
Characteristics: Using this liner will effectively improve grinding efficiency, reduce grinding cost, it is considered to be the best choice for ball mill lining.

规格尺寸 Dimension

| 规格 size | 长 Length (mm) | 宽 Width(mm) | 宽 Width(mm) | 高 Height(mm) |
|----------------------------|---------------|-------------|-------------|-------------------|
| 直砖 Straight brick | 150 | 50 | 50 | 40/50/60/70/77/90 |
| 斜砖 Trapezoidal brick | 150 | 50 | 45 | 40/50/60/70/77/90 |
| 直半砖 Half straight brick | 75 | 50 | 50 | 40/50/60/70/77/90 |
| 斜半砖 Half trapezoidal brick | 75 | 50 | 45 | 40/50/60/70/77/90 |
| 薄砖 Splits | 150 | 25 | 22.5/25 | 40/50/60/70/77/90 |



直砖 Straight Brick



斜砖 Trapezoidal Brick

使用指导 Filling guidance for Using

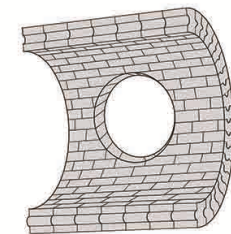
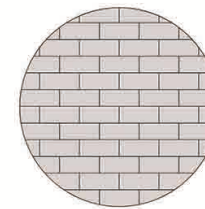
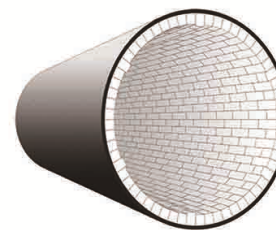
在安装前，球磨机表面的任何砖块或水泥的残留物都应清除干净，光滑表面要弄粗糙。若铁表面磨损严重，要用电焊来修衬。安装时，小接缝大约1mm,水泥为425#白水泥。先在球磨机端面内壁补上一层白水泥，从端面的平面开始放砖，上面的砖重叠在下面两块的接缝上。筒体通常间隔放置一排排的矩形砖和楔形砖。矩形砖和楔形砖的比率参见下表。砌好之后，把里衬的表面清除干净，为使水泥有良好的粘着力和最大的强度，要经常浇水一至二天，然后充水固化十天以上。

Before installation, all the partial remaining of bricks and cement on the inner surface should be completely removed, the smooth surface should be made hoarse, damaged iron, surface should be repaired through welding if it is badly worn. For installation, grout width should be about 1mm using 425# white cement. Brick should be laid from level area of ball mill and moving upward. Surface area should be clean and kept wet by spraying water for 1 to 2 days to increase the cohesion for max hardness. Finally, the ball mill should be filled with water for minimum of 10 days.

| 球磨机吨位 Mill tannage | <0.3T | 0.5T | 1-1.5T | 2.5-3T | 5-25T | 30-40T |
|------------------------------|-------|------|--------|--------|-------|--------|
| 直砖：斜砖 Str. Brick: Tra. Brick | 0:1 | 1:1 | 1:1 | 2:1 | 3:1 | 5:1 |

产品用量表 Quantity of bricks

| MM \ KG | 内衬砖厚度 | | | | 筒体直斜砖用量比率 (直:斜) Ratio(rectangle: trapezoid) |
|-----------------------------|-------|-------|-------|-------|--|
| | 40mm | 60mm | 70mm | 100mm | |
| Φ95XL:102 Ball mill (0.3T) | 580 | 870 | 1015 | | 1:5 |
| Φ130XL:150 Ball mill (0.5T) | 1200 | 1700 | 2045 | 4000 | 1:5 |
| Φ150XL:180 Ball mill (1T) | 1600 | 2400 | 2800 | 5700 | 1:2 |
| Φ180XL:200 Ball mill (1.5T) | 2300 | 3400 | 3950 | 7600 | 1:1 |
| Φ200XL:260 Ball mill (3T) | 3100 | 4600 | 5370 | 11000 | 2:1 |
| Φ245XL:300 Ball mill (5T) | | 6700 | 7800 | 18000 | 3:1 |
| Φ285XL:400 Ball mill (8T) | | 11000 | 13000 | | 4:5 |

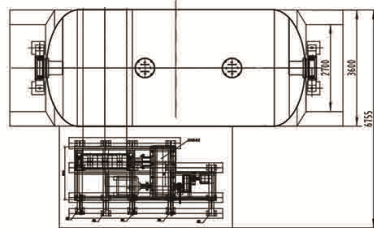
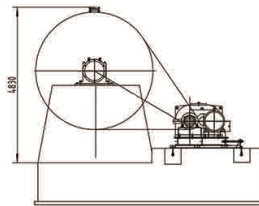
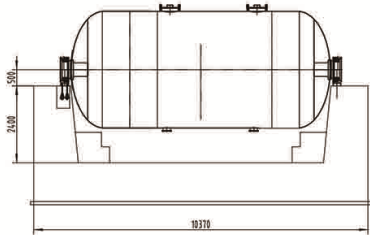




球磨机 BALL MILL

JD-Tech球磨机能满足各类陶瓷生产原料精磨的需求。我司生产的连续式和大吨位球磨机，是理想的陶瓷原料设备，具有启动简便，能耗低，产量高，成料精等特点。能显著提高球磨效率，节约成本。

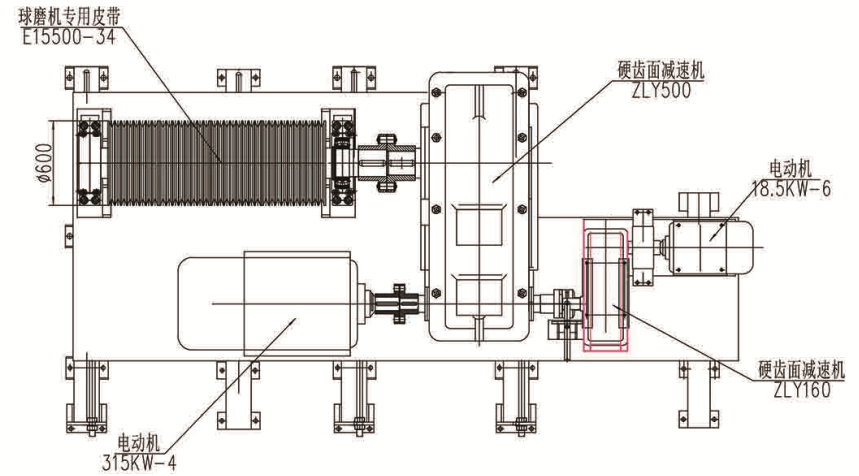
JD-Tech Ball mill could meet the fine grinding requirement of all kinds of ceramic raw materials. Continuous type and large ton ball mills manufactured by JD-Tech are the ideal machinery for ceramic raw materials. They have the advantages of easy starting, low energy consumption, high quantity & quality output. By using JD-Tech Ball mill, it will improve the grinding efficiency enormously thus reduce the production cost.



40吨整机外形图 Outside view

性能参数 Technical Index

| 型号 Model | 规格 Specification | | 主电机 Main Motor | 辅助电机 Auxiliary Motor | 安装尺寸 Dimension(mm) | | | | | | | |
|---------------|------------------|---------------------|----------------|----------------------|--------------------|-------|------|-------|------|------|-----|-----|
| | 吨(T) | 容积(m ³) | 功率(KW) | 功率(KW) | D | L | H | A | B | C | E | F |
| JD-3000*6450 | 30 | 57.2 | 110 | 7.5 | 3400 | 6450 | 2700 | 9250 | 4145 | 2180 | 250 | 550 |
| JD-3600*7000 | 40 | 69.12 | 200 | 11/15 | 3600 | 7170 | 2850 | 10060 | 4437 | 2280 | 250 | 550 |
| JD-4000*5500 | 40 | 67.75 | 200 | 11/15 | 4000 | 5500 | 2950 | 8410 | 4865 | 2315 | 250 | 550 |
| JD-4000*7000 | 50 | 79.25 | 250 | 15 | 4000 | 6765 | 2710 | 9700 | 4815 | 2480 | 250 | 550 |
| JD-4000*8100 | 60 | 97.7 | 250 | 15 | 4000 | 8100 | 2805 | 11700 | 4900 | 2480 | 250 | 550 |
| JD-4100-11200 | 100 | 141 | 315 | 22 | 4100 | 11200 | 3245 | 15000 | 5230 | 2530 | 250 | 550 |



60T球磨机传动系统Driving System



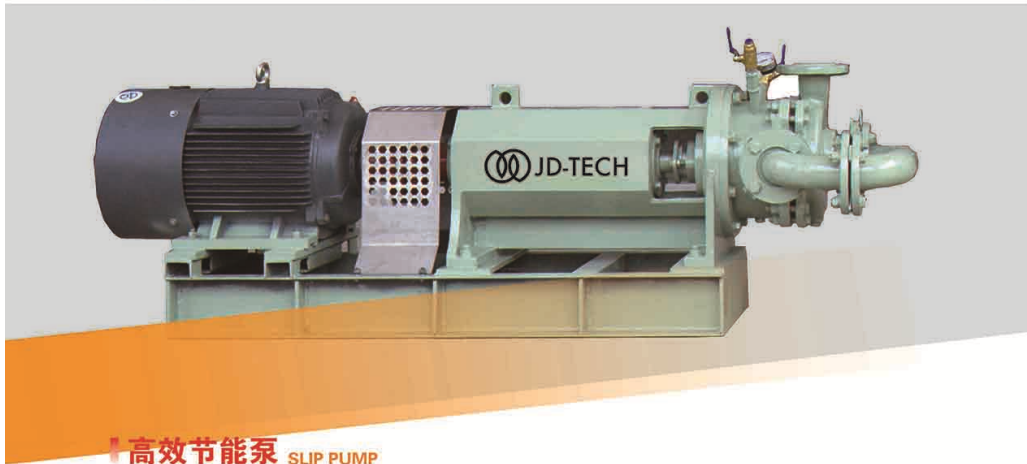
JD-TECH球磨机生产车间应用
JD-TECH Ball mill running factory



JD-TECH 球磨机装运
JD-TECH Ball mill packing



JD-TECH球磨机仓库
JD-TECH Ball mill in stock



高效节能泵 SLIP PUMP

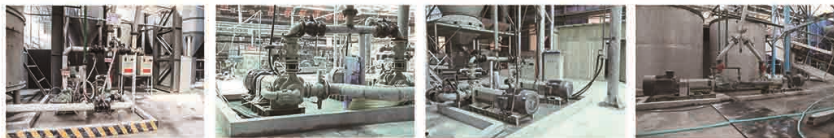
应用：喷雾干燥塔制粉/压滤机滤泥/超远距离输浆，或近距离倒浆（可一泵抽多池）

- 特点：✔ 1.节电，比柱塞泵节电30%以上。 ✔ 2.运行成本低，便于维护。
✔ 3.运行稳定，操作简单。 ✔ 4.制粉效果好，产量大。

Application: Powder manufacturing of spray drying tower/Filtered mud of filter press/Transport slurry at great distances(300 to 1500 meters),or pour slurry from very close distance(one pump can be used for many pools).

- Characteristics:1.Save electricity. Compared to plunger pump, saving electricity more than thirty percent.
2.Low operation cost, easy to maintain.
3.Stable operation, simple operation, reduce the labor intensity of operators and maintainer.
4.Good in powder process, large production.

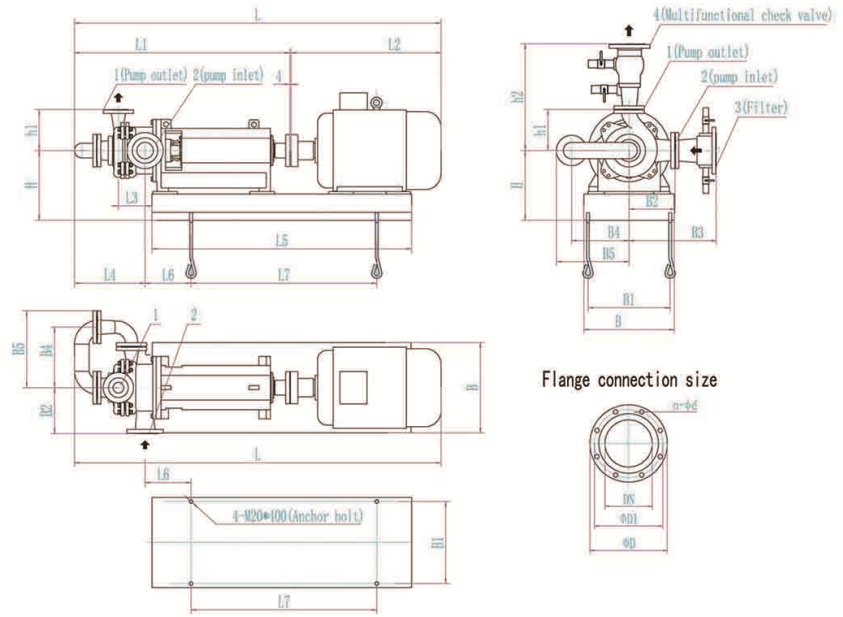
| PISTON PUMP DISADVANTAGE | JD-TECH SLIP PUMP ADVANTAGE |
|--|---|
| 1. Pressure is not stable, so the water absorption is also not stable, it results in raw material quality. | 1. Pressure is stable which make stable water absorption of raw material, it results better quality of body. |
| 2. Many consumable spare parts, some need to change in 15 days and some in 30 days. | 2. No maintenance, more than 150 factories all over the world are using this pump from last 3 years without maintenance and without complain. |
| 3.Capacity is small, need two pumps. | 3. Our pump has bigger capacity, our one pump is equal to two piston pumps. |
| 4. Only one year warranty or no warranty. | 4. One year guarantee (rotter wear loss depend on rawmaterial, may need to change) |
| 5. More electricity. | 5. Energy saving 15% to 35%. |
| 6. Need oil and condensor. | 6. No need water, oil and condensor. |
| 7. Need water continuously. | 7. Our pump is a multipurpose pump can be used for dryer tower, long distance slurry transfer. |



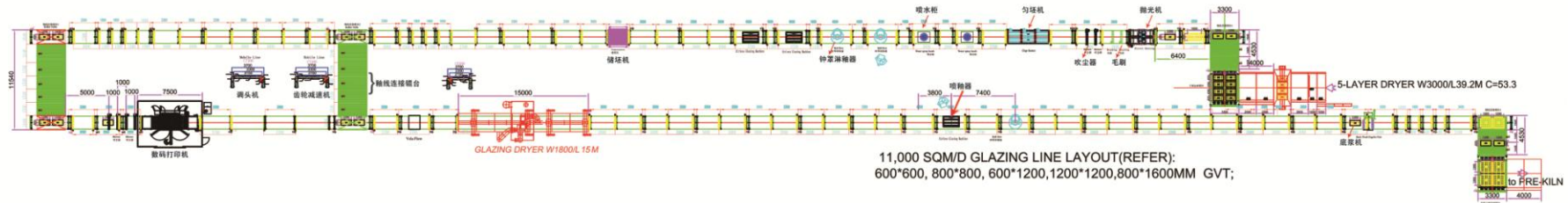
瓷砖生产车间应用实例 JD-TECH Pump Running in factory workshop(tiles).

性能参数 Technical Index

| 型号 Model | 最经济制粉量(T/24H) Most economic powder manufacturing amount | 折合 (T/H) Equivalent | 允许最大制粉量(T/24H) Allowable maximum powder manufacturing amount | 折合 (T/H) Equivalent | 适合干燥塔型号 Fitting drying tower |
|--------------------|---|------------------------|--|------------------------|--|
| SLIP PUMP 450-22 | 200-300 | 10 | 350 | 20 | 2000-4000 |
| SLIP PUMP 600-30 | 300-400 | 15 | 500 | 25 | 4000-6000 |
| SLIP PUMP 1000-37 | 400-600 | 20 | 1000 | 40 | 6000-8000 |
| SLIP PUMP 1200-45 | 600-800 | 30 | 1200 | 50 | 8000-10000 |
| SLIP PUMP 1600-55 | 800-1200 | 40 | 1600 | 65 | 10000-14000 |
| SLIP PUMP 1800-75 | 1200-1400 | 50 | 1800 | 75 | 14000-16000 |
| SLIP PUMP 2400-90 | 1600-2000 | 70 | 2400 | 100 | Above 16000 |
| SLIP PUMP 3000-110 | 2000-2600 | 100 | 3000 | 125 | 一泵供应多塔 One pump supplying many towers |



施釉线 GLAZING LINE



双层九十度辊台 Double layer 90° curve and roller table



调头辊台 Tiles turning talbe



钟罩淋釉器 Bell flow



直线淋釉器 Vella flow



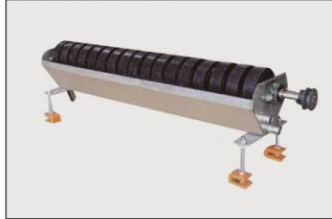
使用现场 Site of Equipment



轴线连接辊台 Up and down table



底浆机 Back wash engobe unit



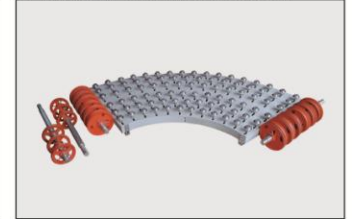
喷釉器 Airlless machine for glazing line



90° 锥棒式转弯机 Roller-Type 90° Curve Unit



90° 托轮式转弯机 Wheel-Type 90° Curve Unit



储坯机 Kiln compensator



窑前储坯机 Pre-kiln compensator



匀坯机 Tile Uniformer



调头机 Tiles turner



大型窑前储坯机 Kiln Compensator(Big Sized)





JD-TECH高频筛
JD-Tech High Frequency Glaze Vibrating Sieve

| 型号 Model | | JDG-600 | JDG-800 | JDG-1000 | JDG-1200 |
|----------|----------------------|--|---------------------|---------------------|---------------------|
| 常用电制 | Normal Power | 380V/50HZ | | | |
| 电机功率 | Motor Power | 0.55KW | 0.55KW | 0.75KW | 1.1KW |
| 振动轨迹 | Vibration Mode | 三次元振动 Three Dimensional Vibration | | | |
| 最大激振力 | Max Vibration Force | 5000N | 8000N | 10000N | 15000N |
| 振幅 | Amplitude | 2-4mm | | | |
| 筛网有效面积 | Effective Sieve Area | 0.220m ² | 0.407m ² | 0.621m ² | 0.933m ² |
| 振动噪音 | Decibels | ≤35db | | | |
| 外形尺寸 | Dimensions | Φ600×860mm | Φ800×860mm | Φ970×890mm | Φ1170×890mm |
| 机体材质 | Body Material | 304 不锈钢 SUS304 Stainless Steel | | | |
| 电机材质 | Motor Material | 铸铝 Cast Aluminum | | | |
| 表面工艺 | Surface Treatment | 底筒酸洗、钝化、喷塑 The Base Pickling, Passivation, Plastic-sprayed. | | | |
| 应用 | Application | 应用于陶瓷行业中釉线和球釉车间的釉料过滤。 Used in glaze filtration of raw material in glazing line and ball glazing workshop. | | | |

振动筛 VIBRATING SIEVE

JD-TECH泥浆筛
JD-Tech Slurry Vibrating Sieve

| 型号 Model | | JDS-1000 | JDS-1200 |
|----------|----------------------|---|---------------------|
| 常用电制 | Normal Power | 380V/50HZ | |
| 电机功率 | Motor Power | 0.75KW | 1.1KW |
| 振动轨迹 | Vibration Mode | 三次元振动 Three Dimensional Vibration | |
| 最大激振力 | Max Vibration Force | 10000N | 15000N |
| 振幅 | Amplitude | 2-4mm | |
| 筛网有效面积 | Effective Sieve Area | 0.621m ² | 0.933m ² |
| 振动噪音 | Decibels | ≤35db | |
| 外形尺寸 | Dimensions | Φ970×890mm | Φ1170×890mm |
| 机体材质 | Body Material | 304 不锈钢 SUS304 Stainless Steel | |
| 电机材质 | Motor Material | 铸铝 Cast Aluminum | |
| 表面工艺 | Surface Treatment | 底筒酸洗、钝化、喷塑 The Base Pickling, Passivation, Plastic-sprayed. | |
| 应用 | Application | 应用于陶瓷行业中原料车间的浆液过滤。 Used in slurry filtration of raw material in ceramics industry. | |

结构与性能对比 Structure & Effect Comparison

| Normal Vibrating sieves | JD-TECH Vibrating sieves |
|---|---|
| 1.Upper frame adopts mechanical crimping & manual welding, the data is inaccurate and has larger deviation. | 1.Energy saving, save 50% electricity compared to other vibrating sieves. |
| 2.Pressed edge appears when Upper frame contacting sieve, so it is unfavorable to discharge slurry waste. | 2.Upper frame adopts numerical control molding, automatic welding , with accurate data & zero error; the welding is smooth, no stains. |
| 3.It' s time consuming & complicated during the replacement of sieve. | 3. No pressed edge appears when Upper frame contacting sieve, so it has good discharging effect and the slurry waste is more dry; it extends the service life of the sieve. |
| 4.Rough workmanship, the overall effect is not good | 4.Upper frame is newly developed and has fewer quick-wear parts, saving labor & reducing the production costs. |
| 5. Lack of quality management system . | 5.It' s easy to replace the mesh screen, saving production time. |
| | 6.Its base uses special production process and has longer service time. |
| | 7.Reliable quality, high efficiency, fine workmanship and beautiful shape. Products have been certified by CE,ISO9001 & Rohs certificates. |

除铁机 MAGNETIC IRON REMOVER

全自动浆料永磁除铁机 Full-automatic slurry magnetic iron remover

应用：建筑陶瓷厂、工艺陶瓷厂、卫浴等一些自动流动的物质
特点：旋转式全自动除铁机，不需专人看管，自动吸取物料中的铁并自动去除吸取上来的铁，是一款新型除铁机，具有产量高、损耗小、故障率低、安装方便、节能等特点。水泵、电磁阀、软管、管道均选用国内外知名品牌。

Application: Deal with flowing substance like slurry in building material/craft /sanitary ceramic factory.
Characteristics: Rotary full-automatic machine with no need of special care, could absorb and remove the Iron from slurry automatically. It is a brand new machine which has the features of high-output, low loss, low failure rate, easy to install and cost effective. Raw materials like water pump, solenoid valve, hose and pipe are purchased from famous brands in home and abroad.



| 型号 Model | 额定电压 Voltage | 额定功率 Power | 额定磁场 Magnetic Field | 处理能力 Processing Capacity | 外形尺寸 Dimension | 重量 Weight |
|-------------|-----------------|---------------|------------------------|-----------------------------|-------------------|--------------|
| JDS-4 | 380V | 0.5KW | 18000GS | 20T/H-25 T/H | 1700*1500*1600mm | 1750KG |
| JDS-6 | 380V | 0.5KW | 18000GS | 35T/H-45T/H | 1700*2000*1600mm | 2500KG |

全自动釉料永磁除铁机 Full-automatic glaze magnetic iron remover

应用：建筑、工艺、卫浴等陶瓷厂的釉料处理。
特点：高梯度磁场，最高工作磁场达18000GS-20000GS.大于200目的铁磁性物质，吸收率在98%以上，可有效提高釉面品质与白度。全自动控制，能耗低。水泵、电磁阀、软管、管道均选用国内外知名品牌。

Application: Deal with glaze materials in building material/craft /sanitary ceramic factory.
Characteristics: high gradient magnetic field, the maximum working magnetic field is 18000GS-20000GS. For ferromagnetic substance that above 200 mesh, its absorption rate is more than 98% thus improve quality & whiteness of glazed effectively. Full automatic control, low wear loss. Raw materials like water pump, solenoid valve, hose and pipe are purchased from famous brands in home and abroad.



| 型号 Model | 额定电压 Voltage | 额定功率 Power | 额定磁场 Magnetic Field | 处理能力 Processing Capacity | 外形尺寸 Dimension | 重量 Weight |
|-------------|-----------------|---------------|------------------------|-----------------------------|-------------------|--------------|
| JDG-2 | 220V | 0.75KW | 18000GS | 3-5 T/H | 1500*1110*1200mm | 800KG |
| JDG-1 | 220V | 0.55KW | 18000GS | 1.5-2 T/H | 1300*900*1200mm | 600KG |

全自动粉料永磁除铁机 Full-automatic dry powder magnetic iron remover

应用：粉状及小颗粒状物料的除铁。
特点：高梯度磁场，最高工作磁场达18000GS-20000GS.吸收率在96%以上。高产出量，达6-10T/H.全自动化作业，降低生产成本。
Application: Iron removal for powder and granule substance.
Characteristics: high gradient magnetic field, the maximum working magnetic field is 18000GS-20000GS. Iron absorption rate is more than 96%. High output that up to 6-10T/H. Full automatic thus reduce production cost.



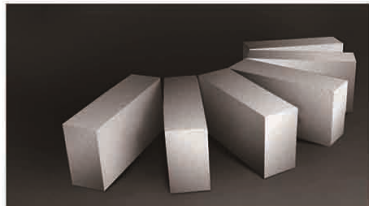
| 型号 Model | 额定电压 Voltage | 磁源 Material | 磁场强度 Magnetic Strength | 处理能力 Processing Capacity | 外形尺寸 Dimension | 重量 Weight |
|-------------|-----------------|-----------------|--------------------------------|-----------------------------|-------------------|--------------|
| JD-P-1 | 220V | 高性能钕铁硼 NdFeB | Φ25*670, 44 pieces >90000GS | 6-10 T/H | 1200*750*590mm | 1750KG |



耐火产品 REFRACTORY PRODUCTS

JD-Tech耐火产品特点：低热容量，低热导率/耐高温/高强度/优良的化学稳定性、热稳定性及抗热震性/容易成型或切割/吸音性能好
 Characteristics of JD-TECH refractory products: Low heat storage & thermal conductivity/ High temperature resistance/ High strength/ Excellent chemical, thermal stability & thermal shock resistance / Easy operation/ Good sound absorption

耐火砖 Firebricks



应用：冶金/石化/建材/陶瓷/机械等行业的工业炉内衬。
 Application: Furnace lining in the fields of Metallurgy / Petrochemical / Construction / Ceramics / Machinery

耐火纤维棉 Bulk Fiber



应用：纤维毡、板制品及纤维纺织制品的原料/膨胀节填料/过滤介质/浇注料和填补剂原料/保温材料
 Application: Staple materials for other ceramic fiber products/Expansion joint packing/Filtration media/ Moldable and Mastics feedstock/Ladle insulation

陶瓷纤维板 Ceramic Fiber Board



应用范围：冶金/有色金属/陶瓷/玻璃/轻工业/石化/模具行业
 Application: Metallurgy/Non-ferrous metal/Ceramics/Glass/Light industry/Petrochemical/Mold industry

异形件 Special shaped Fiber Felt



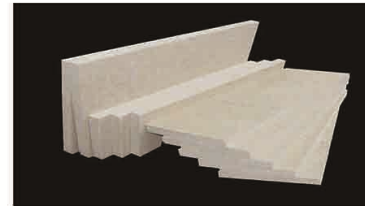
陶瓷纤维毯 Ceramic Fiber Blanket

应用：工业窑炉/高温设备绝热保温/高温垫片/熔融金属隔热/高温膨胀接缝

Application: Annealing furnaces/ Furnace door linings and seals/ Soaking pit covers and seals/ Furnace hot face repairs/Reheating furnace and ladle covers



屋顶隔热板 Roofing thermal insulation board



陶瓷纤维背衬板 Back lining board



纤维炉底板 Fiber hearth base plate



纤维毡 Fiber felt



耐火条 Strips



陶瓷纤维纺织品 Ceramic fiber products



陶瓷纤维薄板 Ceramic Fiber Thin Board

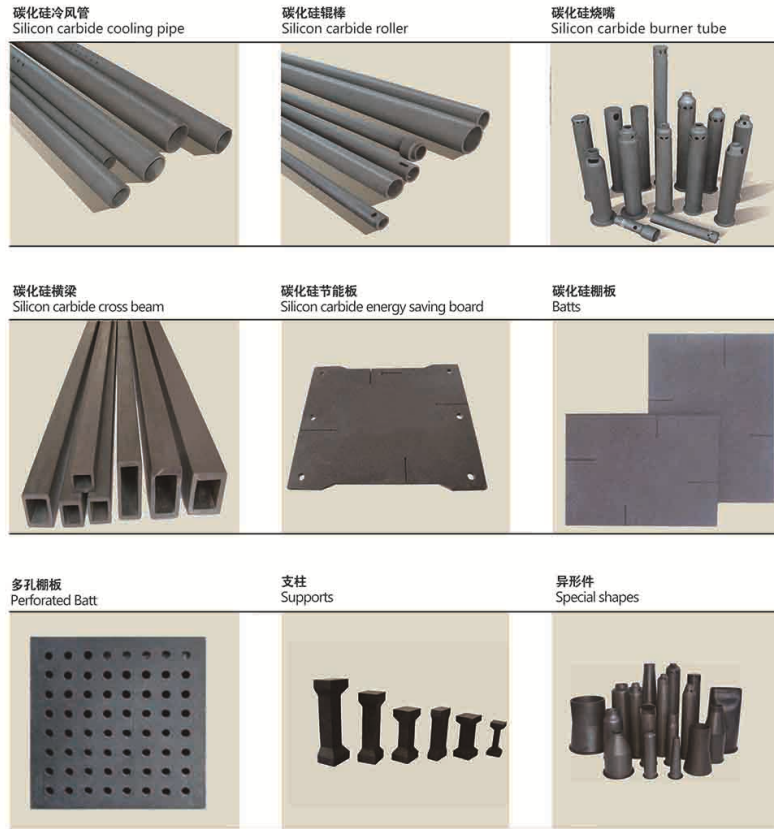


陶瓷纤维模块 Multi module



窑具-碳化硅系列产品 KILN FURNITURE-SILICON CARBIDE SERIES

JD-Tech碳化硅产品应用：烧结陶瓷、日用瓷、卫生瓷、建筑瓷、磁性材料、电瓷，广泛应用于隧道窑、梭式窑、辊道窑。
 特点：具有良好的抗热震性能，抗腐蚀及抗氧化性，良好的导热及导电性，高温下有良好的机械强度。是用于1300°C以上最理想的耐火窑具和窑体结构材料。
 Applications of JD-Tech SIC products: Sintered ceramic, tableware porcelain, sanitary ware, construction ceramics, magnetic materials, electro ceramics. Widely applied in tunnel kiln, shuttle kiln and roller hearth kiln.
 Characteristics of JD-Tech SIC products: Good thermal shock resistance, corrosion & oxidation resistance, excellent thermal and electric conductivity and high mechanical strength at high temperature. It's the best refractory for use in kiln furniture and kiln construction where operating temperatures are above 1300°C.



窑具-董青石和莫来石系列产品 KILN FURNITURE-CORDIERITE AND MULLITE SERIES

JD-Tech董青石和莫来石系列产品应用：日用瓷，卫生陶瓷，建筑陶瓷，微晶石材，砖瓦制品，磁性材料，粉末冶金，粉体煅烧，工业陶瓷，技术陶瓷和食品加工。广泛应用于隧道窑、梭式窑、辊道窑。
 特点：具有极佳的耐急冷急热性能和适中的常温 and 高温抗折强度，是用于1300°C以下最理想的耐火窑具和窑体结构材料。
 Applications of JD-Tech C&M products: Tableware, sanitary ware, construction ceramic, crystallized glass panel, heavy clay, ferrite material, powdered metal, powder calcinations, industrial ceramics, technical ceramics and food processing industries. Widely applied in tunnel kiln, shuttle kiln and roller hearth kiln.
 Characteristics of JD-Tech C&M products: It possesses excellent thermal shock resistance and is suitable for loading bearing at room and high temperatures. It's the best refractory for use in kiln furniture and kiln construction where operating temperatures are under 1300°C.

